



Service Highlights

Ninyo & Moore offers a comprehensive list of drone services designed to enhance project efficiency, safety, and accuracy. We offer insights into site conditions with high-resolution imagery and data, enabling better decision-making and project management. The ability to monitor construction progress in real-time helps keep projects on schedule and within budget. Additionally, the detailed visualizations created by our drones are ideal for stakeholder presentations, enhancing communication, and project buy-in. These services are invaluable for construction projects and marketing materials. Our services ensure up-to-date data collection, significantly improving project planning and execution. Drone services can be utilized to add another technical dimension to your project.

Key Capabilities Include:

- Document site conditions with aerial photos and videos in High Definition, Ultra High Definition (UHD), or 4K formats
- Investigate large, inaccessible, or hazardous project areas with video feed and High Definition (HD) photographs
- Offer before, during, and after imagery of project
- View elevation maps, Three-Dimensional (3D) models, and HD imagery easily using shareable internet links (not survey level)
- Combine aerial imagery of the entire site as a spatially referenced geoTiff
- Estimated stockpile and cut/fill volumetric calculations for quality control/contractor verification calculation during project monitoring
- Create 3D attribute-based Point Cloud models in LiDAR-native LAS and XYZ data formats (not survey level)
- Generate Digital Terrain Models (DTM) and Digital Elevation Models (DEM) for geotechnical analysis

Presentation Highlight: Estimating Stockpile Volumes using Drone Surveying Technology

Battelle Thirteenth International Conference on Remediation of Chlorinated and Recalcitrant Compounds Conference

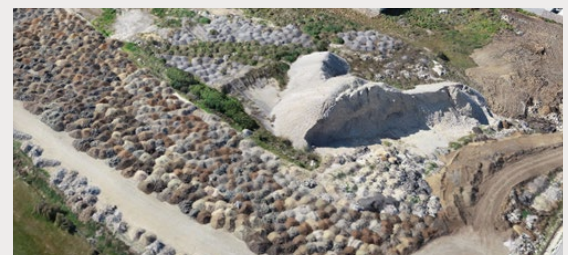
This presentation showcases our advanced use of drone technology to reduce costs for safe, accurate, and efficient stockpile volume estimation. Utilizing sophisticated software, we conducted a comprehensive survey of a 20-acre site, identifying 550 stockpile locations and categorized each type. By calculating the volumes for each grouping, we determined the necessary sampling areas and decided whether the piles should be removed or remain onsite, optimizing resource management and site assessments. To view the case study presentation, please scan or click the QR code to the right. For the Battelle presentation, [click here](#). For the News Article, [click here](#).



VIDEO
PRESENTATION



"Dig Deeper" - Scan or Click to Learn More



3D Modeling Showing Stockpiles

Drone/Unmanned Aircraft System (UAS) Services

Project Highlights

- ADOT Chinle Wash Bridge Geo. Survey
- ADOT I-17 Flex Lanes and Widening
- ADOT Riverside/Parker Rock Fall Hazard
- Alta Warehouse Geophysical Investigation
- BLM 200-Acre Phase I ESA
- BLM 3,185-Acre Phase I ESA
- BLM Northern Arizona Proposed Mining
- Carlsbad Energy
- City Of Commerce Stockpile Evaluation
- City of Glendale West Marlette Pool
- CMC Steel Plant Expansion Survey
- Coronado Cays HOA Montego Parking
- Corvallis Middle Schools
- DOD Topographic Survey
- Estimating Stockpile Volumes at a Port
- FUSARO Land Reclamation
- Gila River Indian Community Utility Authority Transformer Yard SPCC Surveys
- Golden West Communities South Tower Facade Distress Survey
- Goodyear Airport Runway Improvements
- Greenfield Water Reclamation Plant
- Harshaw Mine
- HEAPS Peak Transfer Station
- Huron Street Denver, CO Pre-Demolition
- Imperial County Sites
- Logan Wells Memorial Skatepark
- MWH Puente Valley Operable Unit
- MWH Saddle Crest Reservoir
- Nikola Corporation EV Battery Facility
- Oak Knoll Elementary Shade Structure
- Phoenix Mayo Clinic SPCC & SWPPP
- Port of San Diego Chula Vista Bayfront
- Rio Verde Village Development
- SCWD Tunnel Stockpile at San Juan Creek
- Sonora High School Gymnasium
- SWC Ray and Alma School ESA
- Tonto Verde HOA Pavement Evaluation
- U.S Forest Service Harshaw Mine Remediation
- U.S. Border Patrol Remediation Survey
- UDOT 17-mile West Davis Utah Corridor
- U-Haul Lake Forest Storage



Ninyo & Moore utilizes cutting-edge drone/UAS technology to provide innovative solutions, enhance project efficiency, and deliver comprehensive data analysis for our clients.



CONTACTS



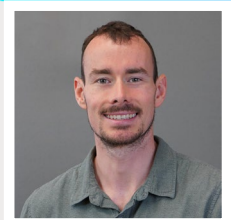
**Ronald Halbert, PE,
FAA Licensed Pilot**
Principal Engineer
rhalbert@ninyoandmoore.com



**Brett McClellan, RG,
FAA Licensed Pilot**
Senior Staff Geologist/
Lead Technical Illustrator
bmcclellan@ninyoandmoore.com



**Arash Amirkhansarie,
FAA Licensed Pilot, PMP,
AWS-CWI, ICC, DSA, PCI**
Senior Project Manager
aamirkhansarie@ninyoandmoore.com



**Matthew Schweiger,
FAA Licensed Pilot**
Staff Geologist
mschweiger@ninyoandmoore.com