



Service Highlights

Ninyo & Moore provides industry-leading Geographic Information Systems (GIS) services and graphical capabilities to equip clients with the necessary technological tools for addressing to-day's geotechnical and environmental challenges. Our comprehensive GIS solutions span all phases of project development, utilizing ArcGIS Pro 3.X software, applications, and extensions with use of ArcGIS Online. We excel in data collection, integration, and spatial analysis across various data types, offering the unique ability to interpret a variety of spatial data and digital formats. This analytical power is crucial for thorough environmental, geotechnical, and materials testing and inspection assessments.

Our GIS services extend from field data collection and mapping to supporting a wide range of project types. We deliver cutting-edge analysis and visuals, integrating ArcGIS technology with the latest CAD software for engineering and construction projects. Additionally, our use of GNSS technology enables efficient data collection, preparation of deliverables, easy information upload to data management systems, and report generation, ensuring accuracy and efficiency in our comprehensive project solutions.

Key capabilities include:

- 3D visualization and representation
- Autodesk AutoCAD, Bentley MicroStation, and Adobe software integration
- Contouring and terrain interpretation
- Cross-section modeling
- Cut/fill analysis
- Digital elevation and terrain modeling
- Drone applications, remote sensing, and aerial photo interpretation
- Field survey, database management, and development
- Geospatial analysis of linear, polygonal, and volumetric features
- Global Navigation Satellite System (GNSS) capability
- Ground Penetrating Radar (GPR) survey support
- Interactive mapping and graphics
- Project-specific approach and development
- Surface and volumetric modeling, contouring, and analysis
- Training and support services
- Web-Map design and collaboration
- Landslide analysis

Four circular icons arranged horizontally, each with a white background and a colored border. The first icon (green border) shows a person icon and the text '600 EMPLOYEES'. The second icon (teal border) shows a location pin icon and the text 'MULTIPLE OFFICES'. The third icon (blue border) shows a laboratory flask icon and the text 'CERTIFIED LABORATORIES'. The fourth icon (dark blue border) shows a QR code and the text 'ADDITIONAL EXPERIENCE'.

"Dig Deeper" - Scan or Click to Learn More

"Your work on the HEAT maps was pivotal in the completion of the task. Not only did you deliver a beautiful product, you were also extremely enjoyable to work with. You handled all requests and product edits with haste and a positive attitude. Thank you for your hard work in completing this task and I am very grateful to have worked with you.

- Dena Hout, Engineering Consultant
HOUT Construction Services

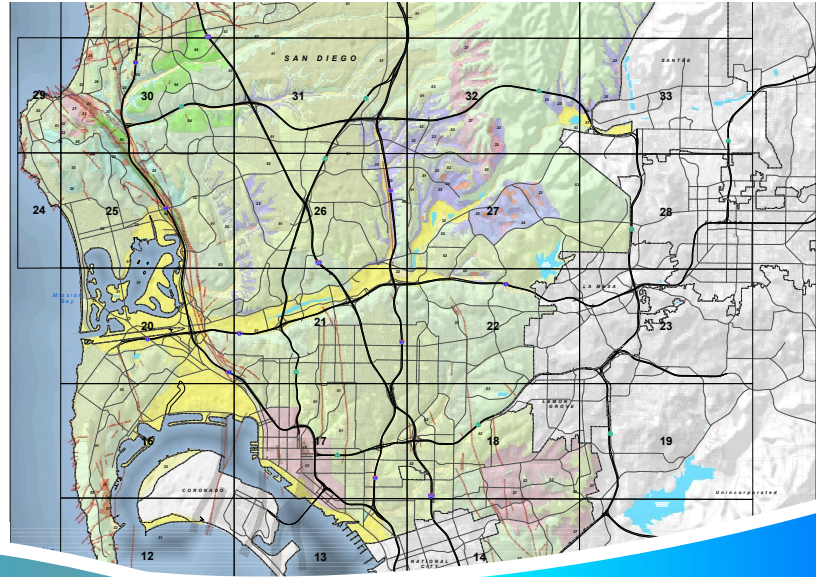
Geographic Information Systems (GIS) Services

Project Highlights

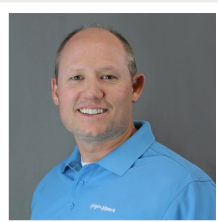
- 500kV Substation Grading: Monterey Park, CA
- 500kV/230kV Transmission Line: Clark County, NV
- Advanced Water Purification Watershed Analysis: San Diego, CA
- Aggregate Resources Study: Northern AZ
- Bay Blvd. Environmental Site Assessment Phase II: Chula Vista, CA
- Beltway 215 Soundwalls: Clark County, NV
- Brownfields Assessment: CASP, Los Angeles, CA; City of San Diego and Northeast Sacramento, CA
- Cut/Fill Analysis: Friendship Park Infiltration Pond, Brighton, CO
- Environmental Risk Assessment, I-5 Corridor: Chula Vista, CA
- Forensic Investigation, Slope Failure: Kaneohe, HI
- Geophysical Survey Mapping: Alta Warehouse, Phoenix, AZ
- Geotechnical Evaluations: Monorail Loop Expansion, Las Vegas, NV; and Road Realignment: Marine Corps Base Camp, Pendleton, CA
- Groundwater Modeling: East Palo Alto, CA/UCI Campus: Irvine, CA
- Historical Aerial Investigation: Mowry Road, Newark, CA
- Illegal Disposal Site Investigation: Port of Oakland, Oakland, CA
- Landfill Investigations: Hellyer Park, San Jose, CA/Phase II ESA: Napa, CA
- Landfill/Groundwater Modeling, School Sites: San Diego, CA
- Landslide Analysis: Rancho Palos Verdes, CA
- Landslide Investigation: La Jolla, CA
- Levee Investigation: La Lima, Peru
- Pavement Evaluation GPR Survey: Douglas County, CO
- PFAS Delineation and Sampling: Irvine Great Park, City of Irvine, CA
- Renewable Transmission/Geotechnical Eval.: LA & Kern Counties, CA
- Residential Home Flood Forensic Investigation: Cody, WY
- RFI Groundwater Modeling: Hawthorne, CA
- Runway Rehabilitation: El Cajon, CA
- Site Historical Summary: Lathrop, CA
- Soil Erodibility, Transmission Line Upgrade: Riverside County, CA
- Solar Sites Geotechnical Evaluations: El Dorado Valley, NV
- Solar Site Grading: Gila Bend, AZ
- Stockpile Survey: Wilmington, CA
- Water System Infrastructure Hydro Survey: Dillon Beach, CA
- Wastewater Collection Alignments: Clark County, NV
- Whole Site Modernization, Various School Sites: San Diego, CA



Unlock comprehensive spatial solutions with Ninyo & Moore's GIS expertise, turning complex data into clear, strategic advantages.



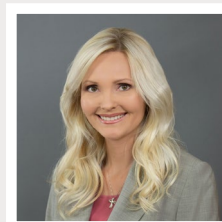
CONTACTS



Jesse Lahman
GIS Analyst
jlahman@ninyoandmoore.com



Alex Balane
Lead Technical Illustrator
abalane@ninyoandmoore.com



Michelle Trevett
Marketing Design Director
mtrevett@ninyoandmoore.com